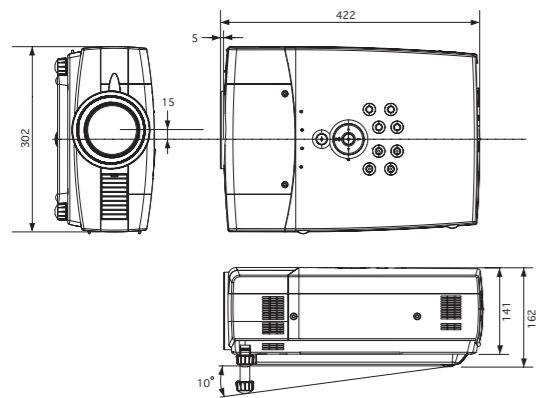
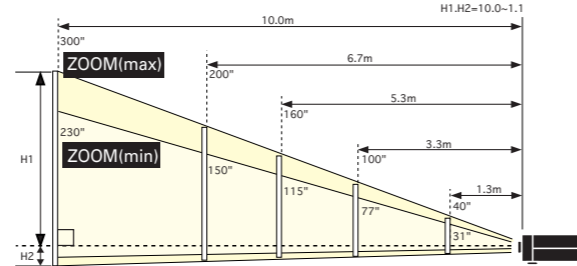


External dimensions (unit: mm)



Approximate throw distance/picture size

• PLC-XT15/XT10 (standard zoom lens model)



Screen size(inches)	300"	200"	180"	160"	140"	120"	100"	80"	60"	40"	30"
Zoom(min)	—	8.7m	7.8m	6.9m	6.1m	5.2m	4.3m	3.5m	2.6m	1.7m	1.2m
Zoom(max)	10.0m	6.7m	6.0m	5.3m	4.7m	4.0m	3.3m	2.6m	2.0m	1.3m	—

Model number	PLC-XT15	PLC-XT10
LCD panel system	Three TFT active matrix type panels	
Optical system	Dichroic mirror separation/prism	
Panel size	Three 1.0-inch panels, 4:3 aspect ratio	
Panel type	Polysilicon TFT active matrix	
Panel resolution	1024x768 dots	
Number of pixels	2,359,296 (786,432x3)	
Pixel arrangement	Stripe	
Projection lens	F1.7 to F2.1, f=33 to 43mm, 1x to 1.3x power-driven zoom	
Keystone correction	U/D:±40/-20 degree, L/R:±10 degree (Maximum)	
Projection lamp	250W UHP lamp	
Screen size	Adjustable from 30 to 300 inches	
Throw distance	From 1.2 to 10.0m	
Picture brightness	3,200 ANSI lumens	2,500 ANSI lumens
Uniformity	90%	
Contrast ratio	800:1	700:1
Amplifier	2W+2W stereo	
Speaker system	Two pieces φ45mm	
Scanning frequency	15-100kHz	
	50-100Hz	
Dot clock	140MHz or less	
Laser spec	Laser type	Class II
	Wavelength	650±20nm
	Output	1mW MAX
Horizontal resolution	800 TV lines	
Color systems	PAL, SECAM, NTSC, NTSC4.43, PAL-M, PAL-N	
Computer inputs	Analog/Digital RGB(DVI-I), Analog RGB(mini D-sub 15-pin), Audio (Stereo mini jack)x2	
Monitor output	Analog RGB (mini D-sub 15-pin), Audio (Stereo mini jack)	
Video inputs	Composite(RCAx1), Component(RCAx3), S-video(mini DIN 4-pin), Two RCA audio (stereo)	
Other terminals	mini DIN8-pin & USB (B type)	
Operating environment	5 to 35 °C	
Rated power supply	100-240V AC, 50/60Hz, auto voltage selection	
Power consumption	350W	
Dimensions(WxHxD)	302x162x422mm	
Net weight	7.8kg	
Standard accessories	AC power cord Wireless remote control unit Mouse cable (Serial) Analog RGB cable (DOS/V), DVI-I/D-Sub15 Adapter, USB Cable	

Safety Precautions

- Do not install the LCD projector in areas exposed to water, humidity, dust, oil or smoke or in close proximity to heat sources. Make sure the heat vents are not blocked. Fire, electrical shock or unit malfunction may result if the above precautions are neglected.
- Do not look through the lens while projecting as damage to the eyes could result. Take special care when children are close by.
- Do not look at the laser beam coming out of the remote control unit or direct the laser beam toward a person. Direct contact with the laser beam may cause damage to the eyes.

Remarks

- Spare LCD projector parts are kept in stock at least for eight years after the product is discontinued.
- LCD panel manufacturing requires extremely high-precision technology with pixels having a 99.99% quality control rating. However, there does exist a 0.01% or smaller possibility of dead pixels or constantly lit pixels.
- Please note that product colors in the brochure may differ slightly from those of actual products.
- All screen pictures in the catalog are simulated.
- All company and product names are the trademarks or registered trademarks of respective owners.
- Product appearance and specifications subject to change without notice.

Further details regarding this product can be accessed at <http://www.digital-sanyo.com>

***Caution:** please consult the instruction manual to ensure safe and proper operation of the product.

Distributed by:



SANYO Electric Co., Ltd.
TV&Visual Display Products Divisions
©2002 SANYO Printed in Japan 2002.7.SI
SML-028



Portable XGA
Multimedia LCD Projector

PLC-XT15
PLC-XT10

High-Performance Projector



Outstanding presentations, anywhere you go

SANYO introduces two new LCD projectors that combine high performance with true portability to let you deliver high-quality presentations almost anywhere.

The PLC-XT15 and PLC-XT10 begin with high levels of brightness, contrast, and image quality. They add the kinds of features usually found on more expensive models, such as a power-driven lens shift function. They let you deliver powerful presentations without connecting to a PC. And they are versatile, expandable, and ultra-portable, so you can use them everywhere from small meeting rooms to large conference halls. In other words, the PLC-XT15 and PLC-XT10 have everything you've been waiting for in an LCD projector. See how SANYO's newest models provide the ideal solution to your business projector needs.



Crisp, high-contrast, wide-screen images with 3200 ANSI lumens brightness (PLC-XT15) rivet your audience's eyes to the screen, making your presentation more powerful and persuasive.



Set up anywhere you like. The PLC-XT15 and PLC-XT10 are easy to carry and easy to adjust. With the optional short-focus lens, you can make presentations right in a customer's office or meeting room.



ON Business

New Wireless Imager for Presentations via the Network

Wireless Imager Kit (Option)

POA-WL11
POA-WL12

Regarding detailed specifications and countries, refer to the Specifications table in the Options section.



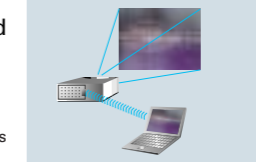
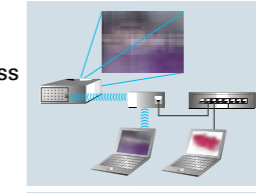
Wireless Imager for quick and easy setup

With no annoying cable connecting. Just attach the Wireless Imager to the projector and start your presentation.



Wireless LAN and peer-to-peer communications.

With IP address setting, PC images can be shown on the projection screen via a wireless access point on the network. This allows peer-to-peer communications when the projector and PC are wireless-connected. You save space and increase convenience.



A commercially available wireless LAN card is needed when connecting to a PC.

Real-time Capture goes beyond application boundaries.

The projector uses a Real-time Capture method whereby images can be captured directly from a PC, thus eliminating boundaries between software applications. It also supports PowerPoint animation along with the advantages of real-time communications. In addition, "one-shot" communications can be selected for conferences with large audiences, and selection takes only a click of the mouse.



By a single person (real-time communications)
Note: Moving pictures cannot be projected.

By many persons (one-shot communications)

Wireless remote control of projector and PC mouse.

Both projector and PC mouse can be operated without cables by the attached remote control. You can also turn the projector on or off, switch input modes and adjust projected images through the PC screen. In addition, "one-shot" communications can be selected for conferences with large audiences, and selection takes only a click of the mouse.

Correspondence country table

POA-WL12	
Austria	Belgium
Denmark	Finland
France	Germany
Ireland	Italy
Luxembourg	Netherlands
Portugal	Spain
Sweden	United Kingdom
Norway	Switzerland
Greece	Iceland
Lichtenstein	Korea
Singapore	Thailand
Australia	New Zealand
POA-WL11	
USA	Canada
Taiwan	Malaysia

General Specifications		Power supply	Power consumption	8W	
Wireless part	Network interface	IEEE802.11b	Projector connection	External interface	Digital RGB output: DVI (29-pin (male))
	Communication mode	Pseudo AdHoc, 802.11AdHoc, infrastructure	Environmental conditions	Operating temperature	5 to 35°C
	Frequency band	POA-WL11: 2,412 - 2,462MHz (channels 1-11) POA-WL12: 2,412 - 2,472MHz (channels 1-13) France: 2,457 - 2,472MHz (channels 10-13)	Standard conformity	Storage temperature	-20° to 60°C
	Modulation/Demodulation method	DS-SS (Direct Sequence Spread Spectrum)	Others	FCC	FCC part 15 ClassB
	Communication range	At 11Mbps: Indoor, 30m/Outdoor, 140m NOTE: The above data may vary depending on the operating environment.	CE	IC	ICES-003 ClassB
	Wireless transfer speed	1/2/5.5/11Mbps (automatic switching)	Weight	R&TTE	53 (W) x 86 (D) x 26 (H) mm (excluding any protrusion)
Security	WEP40/128 bits, SSID/ESSID			Approximately 265g (Excluding Wireless LAN card)	

Operating environment

OS support	Microsoft Windows 95/98/Me, /Microsoft Windows NT4.0 workstation, /Microsoft Windows 2000 Professional, /Microsoft Windows XP Home Edition/Professional
Protocol	TCP/IP
Network	IEEE802.11b
Recommended PC CPU	Pentium III 600MHz or higher
Memory	64MB or more is mandatory (128MB or more is recommended). 128MB or more is required for Windows XP. Note: Additional memory may be required depending on simultaneous applications.
Hard disk	10Mbyte or more
Screen settings	Resolution: VGA (640x480), SVGA (800x600) or XGA (1024x768). Number of colors: 16 bits (65,536 colors) or 24/32 bits (1,677,000 colors).

For other countries, check the Specifications Sheet.

MCI Unit for Computer-less Presentations

You can leave your computer in the office and still make effective presentations thanks to the (optional) Media Card Imager. Using the MCI unit utility software, you can convert your computer presentation screen data to image data and download to a PC card.



MCI Kit (Option)

POA-MD07MCI



Package Contents
Media Card Imager unit CF card (16MB)
CF adapter CD-ROM Operation Manual

- * BMP or JPEG data formats, SXGA (1280 x 1024) to VGA (640 x 480) resolution.
- * MCI unit slot: Compactflash card only (incompatible with SmartMedia and other cards).
- * DVI-D port cannot be used when MCI unit is connected.
- * Utility software for Windows 95/98/Me/NT 4.0 (SP3.0)/2000 only.
- * Some picture information may be lost in digital compression.

Quality

3200 ANSI lumens*-Bright enough for large conference rooms

The high-performance 250-watt short-arc UHP lamp* light source is enhanced by the built-in microlenses of the 1.0-inch XGA polysilicon liquid crystal panels to achieve an on-screen brightness level of 3200 ANSI lumens*. This outstanding brightness makes these projectors ideal for large meeting rooms, conference halls or classrooms.

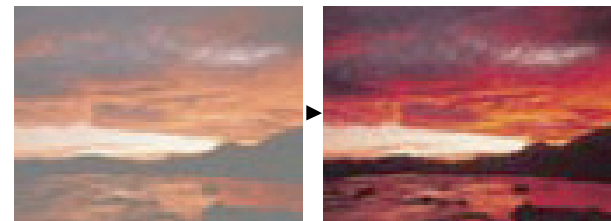


* PLC-XT15 only.

High-contrast optical system

Polarized scattering is corrected as the light passes through the panels, providing high-contrast on-screen color reproduction with solid black. A contrast ratio of 800:1* ensures that these projectors offer more natural image reproduction with finer gradation.

* PLC-XT15 only.



Note: Comparative images shown are not actual projected images.

New progressive scan IC: Beautiful moving images

The PLC-XT15 and PLC-XT10 feature a newly developed progressive scan IC that enhances image quality. Also, the use of an original circuit for cross-color separation gives moving images a more natural and beautiful diagonal resolution. Full compatibility with 2-3 pull-down also assures superb quality when projecting film sources.



Digital high-quality image technology

◆ 3D-AUCC circuit

SANYO's new 3D Automatic Uniformity Correction Control (AUCC) provides precise compensation at a total of 7,425 points. Compared with conventional systems, this offers more than ten times the control over color problems caused by a lack of brightness conformity. The result is smoother, more natural gradation.

◆ 3D digital progressive circuit

3D sampling for each pixel along with SANYO's unique movement detection algorithm program lead to increased vertical and diagonal resolution on moving video images.

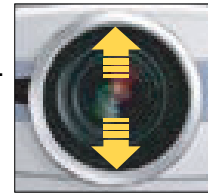
◆ 3D digital noise reduction

Luminance noise and chrominance noise in the video signal are filtered out by this circuit to ensure finer on-screen colors without flicker.

Usability

Power-driven lens shift for stress-free setup

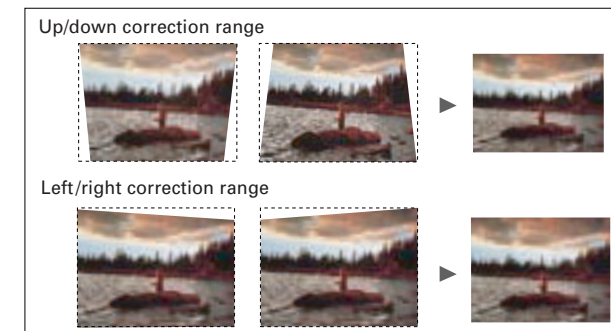
You can move the projected image up and down on the screen without physically moving the projector thanks to the power-driven lens shift. This makes it easy to center the image on screen ready for your presentation.



* Shift ratio is adjustable from 10:0 to 1:1.

Up/down & left/right keystone correction

In addition to up/down keystone correction (maximum +40/-20 degrees), left/right keystone correction* (maximum +/- 10 degrees) is possible. This enables to project correct-looking images even if the projector is not directly in front of the screen.



* Left/right keystone correction can be operated only when the lens shift is set to 10:0.
* On screen image size after correction is smaller than that of the original.
* Correctable range varies depending on operation settings such as lens shift ratio, lens zoom magnification and so on.

Note: Comparative images shown are not actual projected images.

Whisper quiet 31dB*

The Fan Speed Linear Control Circuit adjusts the speed of the cooling fan according to the ambient temperature. You get quiet operation and minimal distraction during presentations.

*ECO mode

Optical & digital zoom for simpler setup

In addition to the 1.3x power-driven zoom focus, these projectors feature digital zoom functions that magnify a section of the screen image by up to 49 times*. You can also compress the screen image down to a maximum of 1/4 its original size* to accommodate your setup parameters.



* Surface ratio.

11-language on-screen graphical user interface

Designed for straightforward use, the GUI provides a choice of 11 languages (English, German, French, Italian, Spanish, Portuguese, Dutch, Swedish, Chinese, Korean, and Japanese).

Utility

Rotary, one-touch lens exchange system

Simply mount the optional lens screw the adapter in place. That's all it takes to exchange a lens. You don't have to disassemble the cabinet or even remove a screw. When it's this easy to mount a short-focus or long-focus lens, it's easier to deliver a presentation anywhere, from large halls to small meeting rooms.



screw the adapter in place.

Versatile connections

The PLC-XT15 and PLC-XT10 are each equipped with a DVI-I terminal that makes it easy to project high-quality images from a PC. For even more versatile PC connection, each model also has a USB port, together with a control port. Each also has component input and can directly accept DVD and high-definition signals, plus a PC monitor out terminal that lets you send images to a second projector.



◆ Presentation timer

The elapsed presentation time* can be displayed on the screen, helping you stay on track when the schedule is tight.
* The time count begins when the P-TIMER button is pressed.

◆ Freeze

You can "freeze" any image and hold it as a still. This is convenient for skipping over downstream images that are not relevant to the presentation.

◆ No-Show function

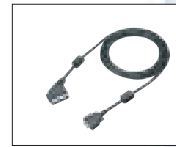
This lets you temporarily blank the screen, so people in the audience will turn their attention to you.

◆ Other features

- ◆ On start
- ◆ Presentation support features
- ◆ Digital resizing
- ◆ Rear/ceiling mount projection
- ◆ Built-in stereo amplifier and speakers
- ◆ Wireless remote control with mouse functions and built-in laser pointer

Option

SCART-VGA Cable



POA-CA-SCART

Mouse/serial port control cables



POA-MCMAC



POA-MCPS2

Projector ceiling mount bracket.....	POA-CHB-XT15
High ceiling mount bracket.....	POA-CHL-PL01
Low ceiling mount bracket.....	POA-CHS-PS01
Shipping case	POA-CC-XT15

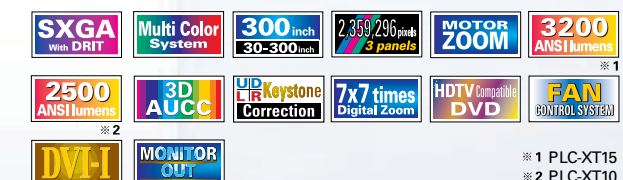


PLC-XT15



PLC-XT10

Portable Multimedia LCD Projector PLC-XT15/PLC-XT10



※ 1 PLC-XT15
※ 2 PLC-XT10